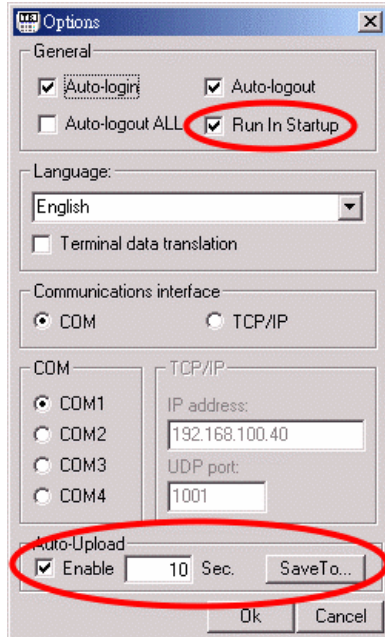


## TR4020/TR4030 Control Center Revision Notes

2002/8/6 V2.2R2 Auto-Upload

1. Add [Run in Startup] and [Auto-Upload] Settings in Options Windows



### Run In Startup

If Enable, The control center will auto execute in next startup

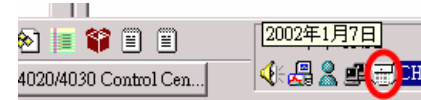
### Auto-Upload

Enable : Enable Auto-Upload

10 Sec : Auto-Upload Time Cycle

Save To: Save records Path

2. If enable Auto-Load, The control center will run in system tray when control center window close.



Click the Icon(right-button),the Icon will show the pop-up menu :

